

Lipper LANA

Holdings Based Classification module

Lipper LANA®'s Holdings Based Classification module (HBC) provides access to the underlying data which enables asset managers to better understand their Lipper holdings-based classification and gain dimension on peer group and performance analysis.

Holdings based analysis is the third key analytic parameter after performance and expense

Lipper LANA's HBC module enables users to filter for peers using Lipper's portfolio level characteristics such as P/E and P/B across multiple time periods. In addition, gain insight into a range of peer group exposures and risk characteristics, including:

- Asset allocation
- Top holdings
- Portfolio concentration
- Portfolio valuations
- Distribution of style exposures
- Distribution of market cap exposures
- Expected risk exposure

Lipper LANA's HBC data is available for U.S. Diversified Equity and World Equity classification systems totaling over 8,000 funds

Analyze portfolio level data

Track Lipper's market capitalization breakpoints monthly, monitor your portfolio classifications and analyze portfolio level data across the entire set of U.S. Diversified Equity and World Equity fund classifications.

Classification benchmarks include:

- S&P 500
- S&P Composite 1500
- S&P MidCap 400
- S&P SmallCap 600
- SP/Citigroup BMI ex U.S. Index: Large Cap Sub Index
- SP/Citigroup BMI ex U.S. Index: Full Index
- SP/Citigroup BMI ex U.S. Index: Mid-Cap Sub Index
- SP/Citigroup BMI ex U.S. Index: Small-Cap Sub Index
- SP/Citigroup BMI Index: Large Cap Sub Index
- SP/Citigroup BMI Index: Full Index
- SP/Citigroup BMI Index: Mid-Cap Sub Index
- SP/Citigroup BMI Index: Small-Cap Sub Index

"Lipper LANA's HBC module offers the convenience of reviewing fund market capitalization and style data in one place."

The HBC module extends Lipper LANA's capabilities to evaluate and present a wide range of performance statistics and information for standard and proprietary funds

Easily pull **time series data** dating back to the inception of Lipper's Holdings Based Classifications :

- Percent of portfolio allocated across capitalization buckets
- Style scores versus benchmark
- U.S. Diversified Equity classification information monthly from 1999
- World Equity classification information monthly from 2004

Easily **export data** from Lipper LANA to plot classification detail. Data exports in the same familiar way as other Lipper applications, and HBC data can be included in the same reports as performance or expense data.

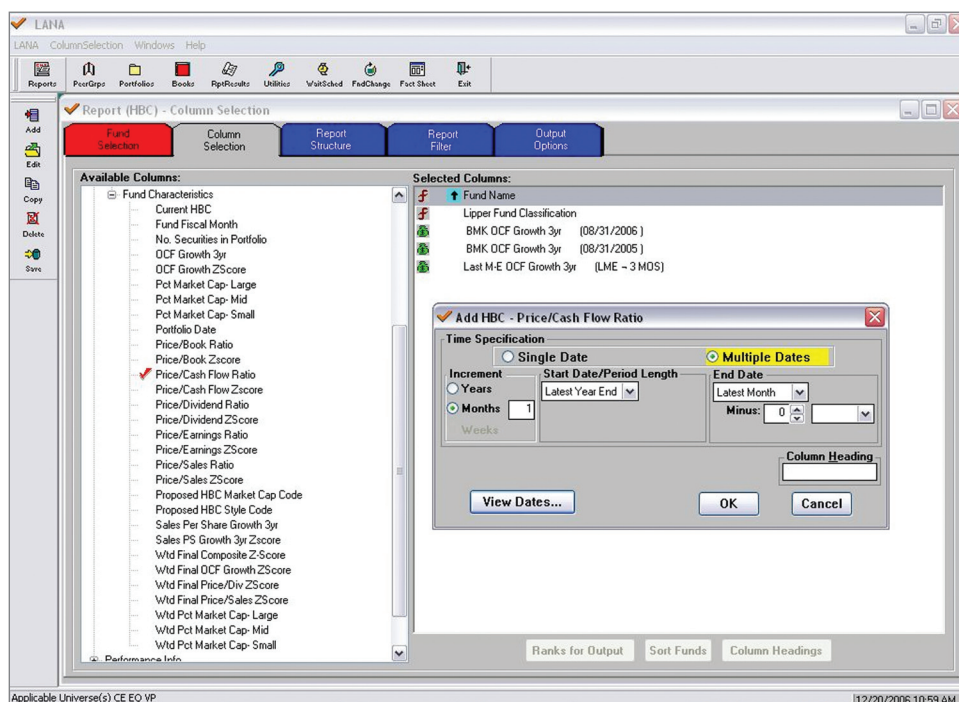
For more information:

Lipper US Client Services
+1 877 955 4773
lipperclientservices@lipper.reuters.com

Lipper Europe Client Services
(UK) 0845 600 6777
(Europe) +44 207 542 8033
support@lipper.reuters.com

Lipper Asia Client Services
+86 755 333 86200
lipper.asia@reuters.com

Website
www.lipperweb.com



Powerful comparative analytics leading to in-depth performance reporting